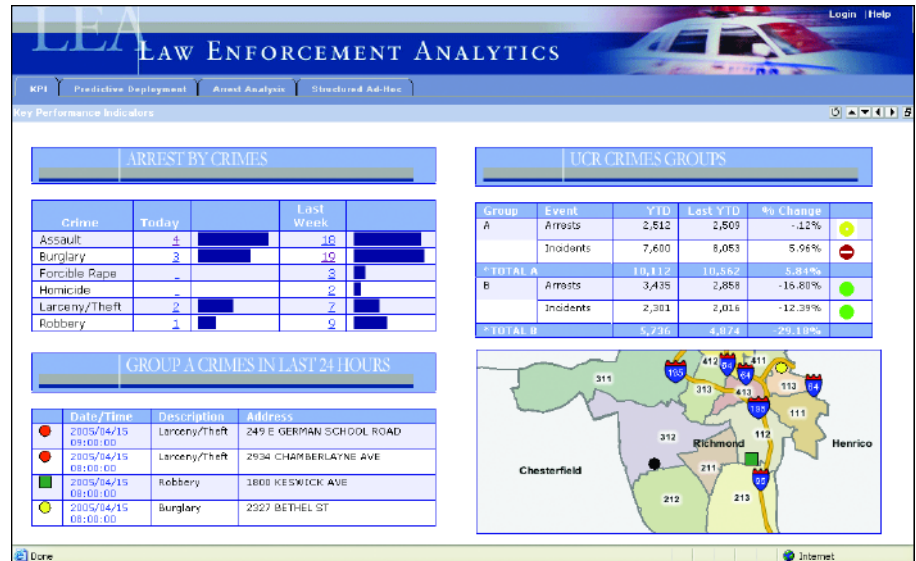


Information Builders is one of the largest independent software companies in the world. We work with over 12,000 customers to ensure their success by putting interactive and actionable information in the hands of everyone in the extended enterprise: employees, partners, suppliers, and customers.

Law Enforcement Analyst Suite

This is an example of the Law Enforcement Analyst Management Dashboard, which provides four separate reports including an interactive map of current crime. Each of these KPIs provides drill down for further detail analysis.



Law Enforcement Challenge

As public safety organizations are faced with limited budgets and personnel, increased service demands, and staggering increases in available information, new tools and different approaches to analysis are required. The challenge is to collect and efficiently deliver timely information to those who need it, in a format they can use to make actionable decisions.

- Spot trends
- Identify repeat or potential offenders
- Locate hot spots
- Allow field officers to generate reports instantly

To accomplish this goal, systems must be capable of integrating data from multiple sources – such as CAD, RMS, criminal history, and incident reports. Then, these systems must provide secure, role-based access and meaningful reports in easy-to-navigate interfaces for users spanning the criminal justice enterprise – from ad hoc reporting of incidents and individuals for officers and detectives on the front line, to powerful analytical tools for analysts, to dashboards providing KPIs for managers. Users must create their own reports, share and save them, schedule them, or even have them automatically generate alerts on user-defined criteria.

Finally, public safety organizations need to spot trends or relationships they didn't realize existed, identify repeat or potential offenders, locate hot spots as they move around, and know what crimes are happening where and when and identify the victims, suspects, and witnesses. All this information results in more efficient force deployment and improved public safety.

Introducing the Law Enforcement Analyst Suite

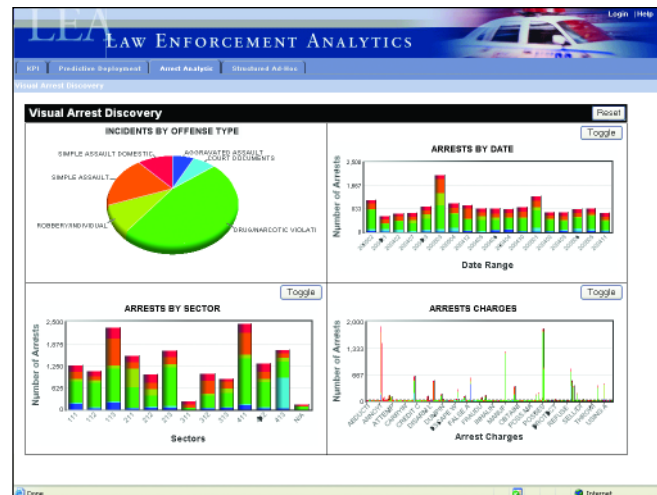
Information Builders has assembled a customizable off-the-shelf (COTS) software solution to assist law enforcement and public safety agencies access, analyze, and understand their data. The package, the Law Enforcement Analyst (LEA) Suite, includes Web-based incident reporting, KPI management dashboards, and interactive-mapping capabilities, as well as predictive analytics and data mining to spot trends about future outcomes.

The Law Enforcement Analyst Suite provides comprehensive integration of criminal justice information and is based upon national standards and the requirements of the U.S. Department of Justice. The Office of Justice Programs grant application requires that new systems be based upon a service-oriented architecture (SOA) and the Global Justice XML Data Model (GJXDM). With the GJXDM adapter from iWay Software, an Information Builders company, a set of pre-built templates for sharing criminal justice information from CAD, RMS, JMS, and incident-management and criminal-history repositories, data can be shared horizontally or vertically. We also leverage it for integrated reporting initiatives such as LEA. Citation, criminal history, incident, and dispatch – any kind of criminal-justice data can be accessed for analysis by the Law Enforcement Analyst.

In addition, LEA supports the FBI's CJIS Security Guidelines, which require all inter-agency access and integration to be certified and accredited before becoming operational through the use of single sign-on and role-based security technologies.

LEA Dashboard and Strategic Analytical Reports

The Law Enforcement Analyst Suite provides a KPI management dashboard and Web-based reports designed around incident reporting for force deployment. From an executive dashboard the entire police command structure throughout a city can monitor crime on a daily and real-time basis. Activity can be analyzed by person, offense, or property through set parameterized reports. Law enforcement agencies can also analyze trends, patterns, and associations of a particular crime occurring in a certain geographic zone or time of day.



Visual arrest analysis provides an integrated graphic view of your related criminal data. Highlight an area on one and all the other graphs dynamically update, and only focus on that area of interest, such as aggravated assault data.

Strategic analysis reports allow you to see the number of incidents by precinct. By drilling down into increasing levels of detail about the group of incidents shown on the opposite page, trends and patterns can easily be spotted. Hot spots, trends, officer activity, workload, response times, and event types by location can all be seen.

With LEA, an e-mail alert can be sent to the appropriate person when certain events occur or thresholds are met. This notification feature provides real-time alerts sent immediately to an officer's Blackberry or mobile data unit.

FDCLIS Report - Microsoft Internet Explorer

Incident Detail Report
All Days of the Week
All Years
Crimes Committed From: 2004/01/01 To: 2005/12/31
Reported on May 22, 2006

Dispatch Zone: 632A

Incident Date	Incident	Location	Offense	Name	Name Title	Race	Gender	Age	Arrest
1/31/2004 12:00:00A	200401120409	1700 COLORADO AVE	SUSPICIOUS SITUATION/PERSON	Jyvenia Delator	179013	B	F	28	
				Offender	292806	B	M	89	
				Victim	354341	B	M	8	
				Victim	244412	B	F	68	
				Victim	143339	B	F	25	
1/30/2004 10:00:00A	200401310007	1711 BLAIR ST	MOTOR VEHICLE THEFT	Complainant	376607	F	F	40	
				Offender	137604	B	F	44	
				Victim	357466	U	M	64	
1/31/2004 10:00:00A	200402040753	1711 BLAIR ST	HIT AND RUN	Victim	360453	W	F	24	
1/9/2004 10:00:00A	200401050501	1711 BLAIR ST	HIT AND RUN	Victim	360453	W	F	24	
1/9/2004 10:00:00A	200401050573	1700 BLAIR ST	BURGLAR/BASE/COMMERCIAL	Complainant	263725	B	M	35	
				Victim	353856	B	M	00	
1/9/2004 12:00:00A	200501090481	1700 JACQUELIN ST	THEFT FROM MOTOR VEHICLE	Victim	353857	B	M	00	
10/28/2004 12:00:00	200410201035	1415 WINDER ST	SIMPLE ASSAULT	Offender	453468	B	M	21	
				Victim	415880	B	F	15	
				Victim	415882	B	F	00	
10/30/2004 10:00:00	200410300794	1707 IDELWOOD AVE	THEFT FROM MOTOR VEHICLE	Victim	495746	B	F	36	
11/15/2004 10:00:00	200411170792	1721 BLAIR ST	BURGLAR/BASE/RESIDENTIAL	Offender	464370	W	M	43	

This is an example of an incident detail report that shows specific information for a requested dispatch zone.

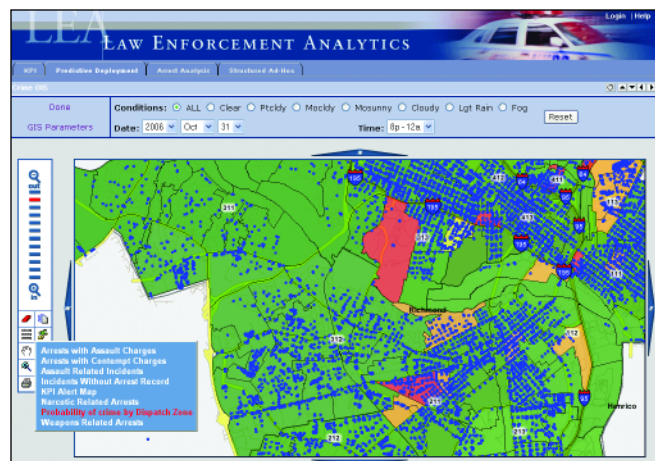
Interactive Mapping

LEA enables investigators to map the locations of incidents-of-interest to better understand the criminal, their actions, and law enforcement responses. Law enforcement agencies can make informed tactical decisions and efficiently deploy officers where they are most needed because analysts see on a map when, where, and what crimes and incidents have occurred. Tabular reports can be presented on a map – or maps can be presented as tabular reports. This mapping capability is facilitated through our partnership with ESRI, the leader in geographic information systems.

Predictive Analytics and Data Mining

LEA comes fully integrated with statistical analysis and data-mining functionality from SPSS, a predictive analytics software and solutions provider. This innovative analysis solution fosters predictive policing as opposed to the traditional reactive approach.

In addition to past incident and arrest data, the application may use other data feeds such as daily weather reports, city or event information, or other measurable attributes to correlate with these historical events. By applying predictive analytics to this data, an agency can develop a model showing how probable it is that a particular crime, such as an aggravated assault, will occur at a certain place, on a given date, and during a specific time period.



The predictive mapping facility illustrates how by selecting changing weather patterns in conjunction with past incident and aggravated assault data, we can predict future crime activity and take action to prevent it from occurring.

Find Out More

To find out how our solutions can help your company succeed, talk to an Information Builders representative today. Contact your local Information Builders office, visit us at www.informationbuilders.com, or in the U.S. and Canada, call **(800) 969-4636**.

Predictive analytics can also help agencies in determining when minor crimes are likely to escalate into violence. By analyzing criminal offender databases and quickly identifying a correlation between similar types of crimes, law enforcement agencies can take action to prevent violence before it occurs.

With predictive analytics agencies can:

- Generate sophisticated graphics for real-time analysis and visualization
- Identify prolific criminals most likely to repeat specific crimes in specific areas
- Predict the likelihood of a particular crime occurring in conjunction with factors such as events or weather, certain geographical zones, particular dates, and certain shifts
- Analyze criminal offender databases and identify the correlation between similar types of crime
- Accelerate the criminal investigation process by quickly sifting through large data sets to generate investigative lead information
- Identify suspicious activity and patterns more quickly and effectively

Ultimately, the Law Enforcement Analyst Suite enables a proactive and predictive approach to police-led intelligence in the fight against crime, enhancing public safety, and improving the quality of life for the community.

About Information Builders

Information Builders, a \$300 million company, is the leader in enterprise business intelligence and real-time operational reporting. The company's WebFOCUS product – the industry's most scalable, secure, and flexible – is able to meet all the reporting needs of the extended enterprise, ranging from analysts to power users to the widest deployments for hundreds of thousands of users. Additionally, WebFOCUS' empowerment of organizations seeking to leverage all their data – by accessing it all from legacy to data warehouse – is unmatched.

Information Builders' award-winning technology has successfully provided quality software and superior services for over 30 years to more than 12,000 customers, including most of the Fortune 100 and U.S. federal government agencies. Headquartered in New York City with 90 offices worldwide, the company employs 1,750 people and has over 350 business partners.

> > **To see a demo of the application visit www.informationbuilders.com/lea**



Corporate Headquarters Two Penn Plaza, New York, NY 10121-2898 (212) 736-4433 Fax (212) 967-6406
www.informationbuilders.com askinfo@ibi.com

Canadian Headquarters 150 York St., Suite 1000, Toronto, ON M5H 3S5 (416) 364-2760 Fax (416) 364-6552

Copyright © 2006 by Information Builders, Inc. All rights reserved. [51]

All products and product names mentioned in this publication are trademarks or registered trademarks of their respective companies.

DN7505283.0706

For International Inquiries +1(212) 736-4433



Printed in the U.S.A.
on recycled paper